




## GypWall AQUA

GypWall AQUA system uses Gyproc Moisture Resistant board that has inherent protection against moisture, thanks to the treated liners and the gypsum core incorporating water

repellent additive. The system is further enhanced with Weber materials, tile fixing, grouting system, and enabling usages in intermittently damp areas such as toilets, bathrooms and kitchens.



GypWall AQUA

Partition thickness mm	Maximum height mm	Area	Fire performance EI mins	Acoustic performance Rw dB	Duty rating
101-238	3,600-7,500	Wet	30-120 	42-60 	Medium-Severe 

### Application

Can be used in both refurbishment and new build where a basic level of moisture resistant wall is required, highly suitable and easily decorated with ceramic tiling and marble. Whilst they can be tailored to meet the requirement of a wide range of applications, they will be more suitable for below sectors

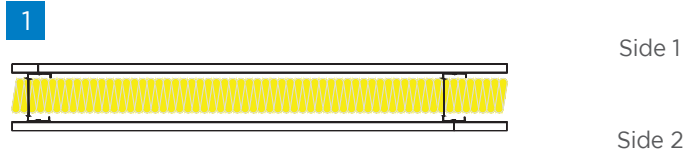
### Sector

- ✓ Residential
- ✓ Office
- ✓ Education
- ✓ Hotel
- ✓ Healthcare

## GypWall AQUA performance

### VT V-Wall C75mm Studs - single layer board lining

Solutions to satisfy the requirements of BS EN 1364-1: 1999 & BS EN ISO 10140-2:2010



One layer of board each side of VT V-Wall C75mm C studs at 610mm centres. 50mm thick Glasswool 12kg/m<sup>3</sup> in the cavity.

Detail	Board type	Partition thickness mm	Lining thickness mm	Maximum height * mm	Approx. weight kg/m <sup>2</sup>	Fire performance EI ** mins	Acoustic performance Rw *** dB	Duty rating ****
<b>1</b>	<b>Side 1:</b> Gyproc Moisture Resistant  <b>Side 2:</b> Gyproc Classic	101	1 x 12.5	3,600	22	30	42	Medium
<b>1</b>	Gyproc Moisture Resistant	101	2 x 12.5	3,600	22	30	42	Medium

**Note:**

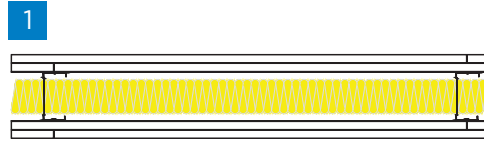
\* Based on a limiting deflection of L/240 at 200 Pa.  
 \*\* EI: Fire Integrity and Insulation - refer to Fire Principle page 17  
 \*\*\* Rw: The Weighted Sound Reduction Index - refer to Acoustic Principle page 24  
 \*\*\*\* Duty rating: Partition grades by categories of duty - refer to Strength & Robustness Principle page 27  
 The quoted performances are achieved only if the system comprises only genuine branded Saint-Gobain Vietnam components: Gyproc plasterboards, Vinh Tuong metal framings, Vinh Tuong accessories, Gyp-Filler Jointing Compound and any other materials specified in the tested systems.

### Application

Internal wall, wet area (1 side or 2 sides) – Residential, Hotel and Office

## VT V-Wall C75mm Studs - double layers board linings

Solutions to satisfy the requirements of BS EN 1364-1: 1999 & BS EN ISO 10140-2:2010



Double layers of board each side of VT V-Wall C75mm studs at 610mm centres. 50mm thick Glasswool 24kg/m<sup>3</sup> in the cavity.

Detail	Board type	Partition thickness mm	Lining thickness mm	Maximum height * mm	Approx. weight kg/m <sup>2</sup>	Fire performance EI ** mins	Acoustic performance Rw *** dB	Duty rating ****
1	<b>Outer layer:</b> Gyproc Moisture Resistant <b>+ inner layer:</b> Gyproc Classic	126	1 x 12.5  1 x 12.5	4,600	40	60	50	Severe

**Note:**  
 \* Based on a limiting deflection of L/240 at 200 Pa.  
 \*\* EI: Fire Integrity and Insulation - refer to Fire Principle page 17  
 \*\*\* Rw: The Weighted Sound Reduction Index - refer to Acoustic Principle page 24  
 \*\*\*\* Duty rating: Partition grades by categories of duty - refer to Strength & Robustness Principle page 27  
 The quoted performances are achieved only if the system comprises only genuine branded Saint-Gobain Vietnam components: Gyproc plasterboards, Vinh Tuong metal framings, Vinh Tuong accessories, Gyp-Filler Jointing Compound and any other materials specified in the tested systems.

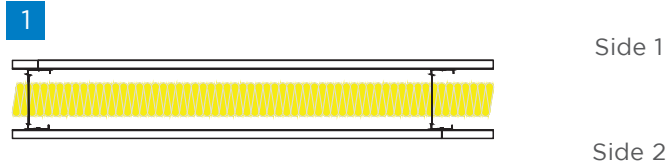
### Application

Unit / apartment divider - wet area - Residential, Office  
 Room to room - wet area - Hotel (≤ 3\*)

GypWall AQUA performance

VT V-Wall C90mm Studs - single layer board lining

Solutions to satisfy the requirements of BS EN 1364-1: 1999 & BS EN ISO 10140-2:2010



One layer of board each side of VT V-Wall C90mm studs at 610mm centres. 50mm thick Glasswool 12kg/m<sup>3</sup> in the cavity.

Detail	Board type	Partition thickness mm	Lining thickness mm	Maximum height * mm	Approx. weight kg/m <sup>2</sup>	Fire performance EI ** mins	Acoustic performance Rw *** dB	Duty rating ****
1	<b>Side 1:</b> Gyproc Moisture Resistant  <b>Side 2:</b> Gyproc Classic	117	1 x 12.5	4,500	22	30	42	Medium
1	Gyproc Moisture Resistant	117	2 x 12.5	4,500	22	30	42	Medium

**Note:**

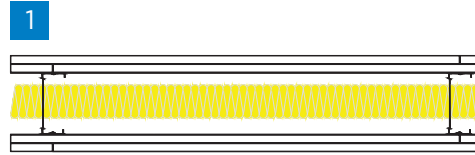
\* Based on a limiting deflection of L/240 at 200 Pa.  
 \*\* EI: Fire Integrity and Insulation - refer to Fire Principle page 17  
 \*\*\* Rw: The Weighted Sound Reduction Index - refer to Acoustic Principle page 24  
 \*\*\*\* Duty rating: Partition grades by categories of duty - refer to Strength & Robustness Principle page 27  
 The quoted performances are achieved only if the system comprises only genuine branded Saint-Gobain Vietnam components: Gyproc plasterboards, Vinh Tuong metal framings, Vinh Tuong accessories, Gyp-Filler Jointing Compound and any other materials specified in the tested systems.

**Application**







Internal wall, wet area (1 side or 2 sides) – Residential, Hotel and Office

## VT V-Wall C90mm Studs - double layers board linings

Solutions to satisfy the requirements of BS EN 1364-1: 1999 & BS EN ISO 10140-2:2010



Double layers of board each side of VT V-Wall C90mm studs at 610mm centres. 50mm thick Glasswool 24kg/m<sup>3</sup> in the cavity.

Detail	Board type	Partition thickness mm	Lining thickness mm	Maximum height * mm	Approx. weight kg/m <sup>2</sup>	Fire performance EI ** mins 	Acoustic performance Rw *** dB 	Duty rating **** 
1	<b>Outer layer:</b> Gyproc Moisture Resistant <b>+ inner layer:</b> Gyproc Classic	142	1 x 12.5  1 x 12.5	5,700	40	60 	50 	Severe 

**Note:**  
 \* Based on a limiting deflection of L/240 at 200 Pa.  
 \*\* EI: Fire Integrity and Insulation - refer to Fire Principle page 17  
 \*\*\* Rw: The Weighted Sound Reduction Index - refer to Acoustic Principle page 24  
 \*\*\*\* Duty rating: Partition grades by categories of duty - refer to Strength & Robustness Principle page 27  
 The quoted performances are achieved only if the system comprises only genuine branded Saint-Gobain Vietnam components: Gyproc plasterboards, Vinh Tuong metal framings, Vinh Tuong accessories, Gyp-Filler Jointing Compound and any other materials specified in the tested systems.

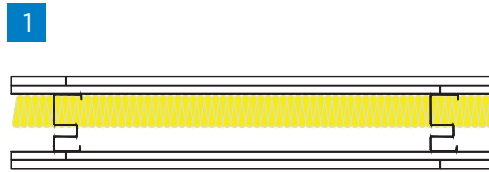
### Application

Unit / apartment divider - wet area - Residential, Office  
 Room to room - wet area - Hotel (≤ 3\*)

## GypWall AQUA performance

### VT V-Sound 90mm Studs - double layers board linings

Solutions to satisfy the requirements of BS EN 1364-1: 1999 & BS EN ISO 10140-2:2010



Double layers of board each side of VTI V-Sound 90mm stud at 610mm centres. 50mm thick Glasswool 48kg/m<sup>3</sup> in the cavity.

Detail	Board type	Partition thickness mm	Lining thickness mm	Maximum height * mm	Approx. weight kg/m <sup>2</sup>	Fire performance EI ** mins	Acoustic performance Rw *** dB	Duty rating ****
1	<b>Outer layer:</b> Gyproc Moisture Resistant <b>+ inner layer:</b> Gyproc Classic	142	1 x 12.5	5,700	41	60	55	Severe

**Note:**

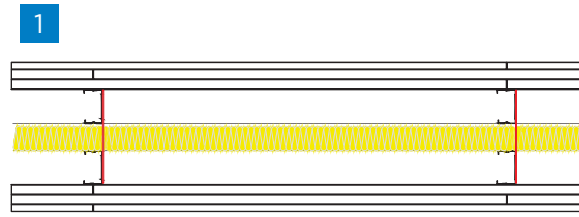
\* Based on a limiting deflection of L/240 at 200 Pa.  
 \*\* EI: Fire Integrity and Insulation - refer to Fire Principle page 17  
 \*\*\* Rw: The Weighted Sound Reduction Index - refer to Acoustic Principle page 24  
 \*\*\*\* Duty rating: Partition grades by categories of duty - refer to Strength & Robustness Principle page 27  
 The quoted performances are achieved only if the system comprises only genuine branded Saint-Gobain Vietnam components: Gyproc plasterboards, Vinh Tuong metal framings, Vinh Tuong accessories, Gyp-Filler Jointing Compound and any other materials specified in the tested systems.

### Application

Unit / apartment divider- wet area - Residential  
 Room to room - wet area - Hotel (≥4\*)

## GypWall AQUA performance

Twin frame VT V - Wall C51mm Studs with cross braces - triple layers board linings  
Solutions to satisfy the requirements of BS EN 1364-1: 1999 & BS EN ISO 10140-2:2010



Triple layers of board each side of Twin frame VT V-Wall C51mm studs at 610mm centres. 50mm thick Glasswool 24kg/m<sup>3</sup> in the cavity.

Detail	Board type	Partition thickness mm	Lining thickness mm	Maximum height * mm	Approx. weight kg/m <sup>2</sup>	Fire performance EI ** mins	Acoustic performance R <sub>w</sub> ***dB	Duty rating ****
1	<b>Outer layer:</b> Gyproc Moisture Resistant <b>+ inner layer:</b> Gyproc FireStop	238	1 x 9  2 x 15	7,500	68	120	60	Severe

### Note:

\* Based on a limiting deflection of L/240 at 200 Pa.

\*\* EI: Fire Integrity and Insulation - refer to Fire Principle page 17

\*\*\* R<sub>w</sub>: The Weighted Sound Reduction Index - refer to Acoustic Principle page 24

\*\*\*\* Duty rating: Partition grades by categories of duty - refer to Strength & Robustness Principle page 27

The quoted performances are achieved only if the system comprises only genuine branded Saint-Gobain Vietnam components: Gyproc plasterboards, Vinh Tuong metal framings, Vinh Tuong accessories, Gyp-Filler Jointing Compound and any other materials specified in the tested systems.

### Application

Room to room - wet area - Hotel (≥ 4\*)

System components

Metal frame products



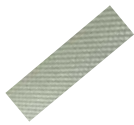
VT V-Wall  
C51/C75/C90



VT V-Wall  
U52/U76/U92

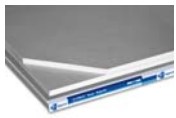


Corner Bead

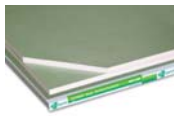


VT Flat Strap

Board products



Gyproc Classic  
12.5mm, 15mm



Gyproc Moisture  
Resistant  
9mm, 12.5mm



Gyproc FireStop  
15mm

Fixing and Finishing products



VT Wafer Head Screw



VT Drywall Screw



Hilti Sealant CP 606



Gyp-Filler  
Jointing Compound



VT Paper Tape



Expansion Bolt

Insulation products



Glasswool 12kg/m<sup>3</sup>;  
24kg/m<sup>3</sup> and 48kg/m<sup>3</sup>

Waterproofing products



Weber .Dry .Top



Weber .BE14



Weber Tai .Flex



## Installation overview



Appropriate VT V-Wall 'U' Tracks are suitably fixed to the floor and soffit. VT V-Wall 'C' Studs are suitably fixed to abutments then fixed to the 'U' Tracks at both head and base, at required centres.

The studs are fixed so as to face the same direction. For a twin frame structure, the two frameworks are braced with VT Flat straps, fixed to the VT V-Wall 'C' Studs with VT Wafer Head Screw. Apply Hilti sealant CP 606 to frame perimeters to provide optimum acoustic and fire performances.

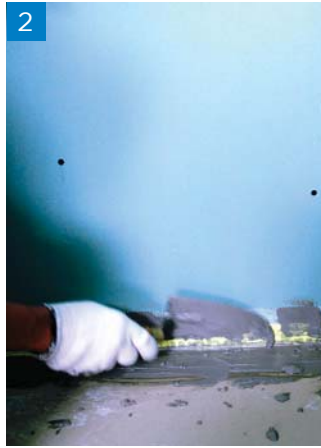
Door openings are constructed to suit the width of door. Extra studs should be provided at openings, corners. Overboard the opening and then cut out to avoid joint directly in line with door jambs.

M&E services can be located within the partition cavity. The insulation shall be added to the partition cavity for increasing acoustic performance. All are normally

installed after one side is boarded. To obtain the optimum acoustic and fire performance, air tightness is essential. Board compensation and an insulation material need to be installed at back of socket boxes. Use appropriate non-combustible material for electric conduit, sockets or appropriate treatment by M&E contractor.

Fix Gyproc plasterboards to metal framework using VT Drywall Screws. For double layer board lining, the outer layer will be assembled so that subsequent horizontal and vertical joints are staggered. Horizontal board joints should be backed with VT Flat Strap.

Seal any gaps up to 5mm with Hilti Sealant CP 606 or gaps up to 10mm (as maximum) with Gyp-Filler Jointing Compound.



Wall and Floor Abutment along the angles are sealed.

Use a brush or rendering trowel to apply the Weber.Dry.Top first coat.

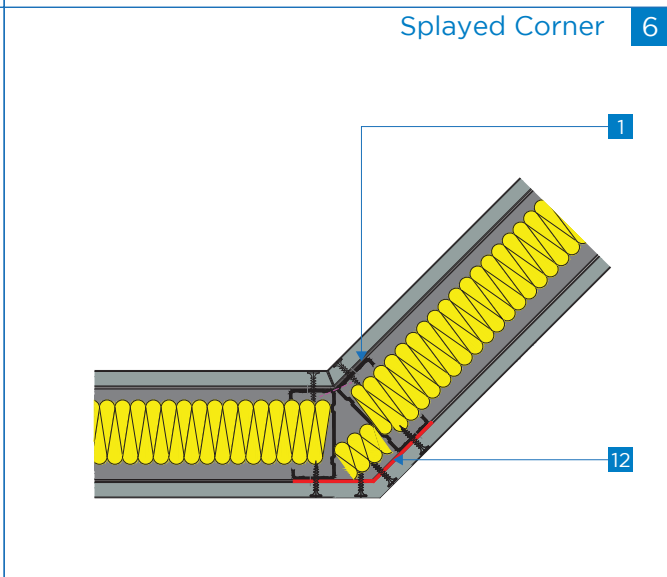
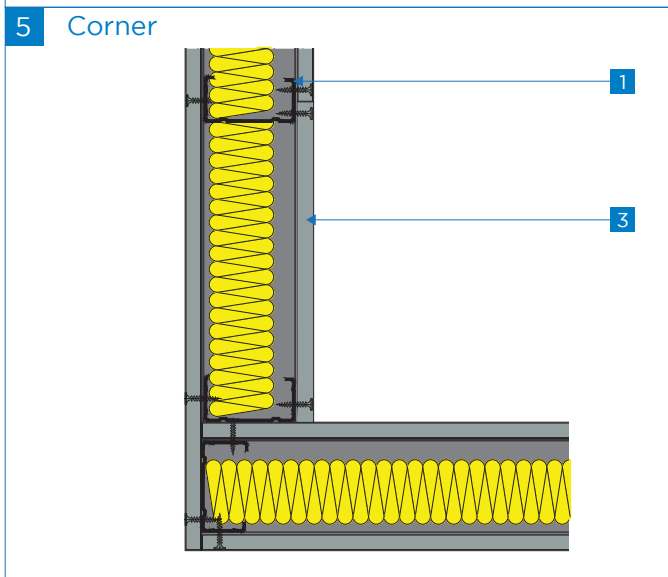
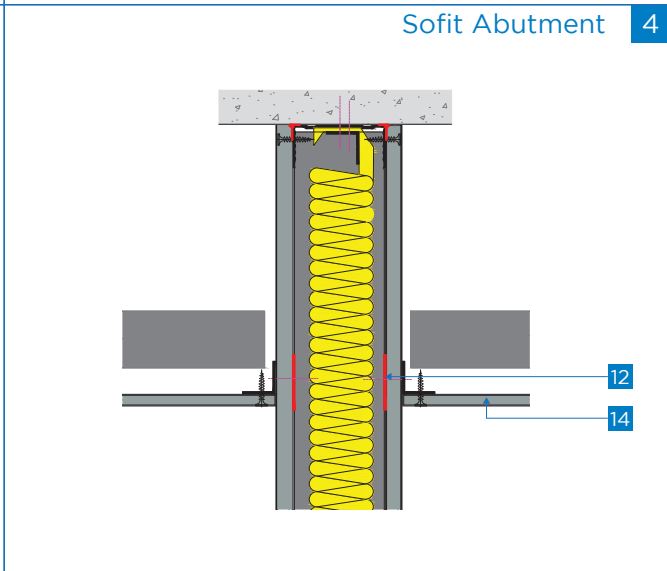
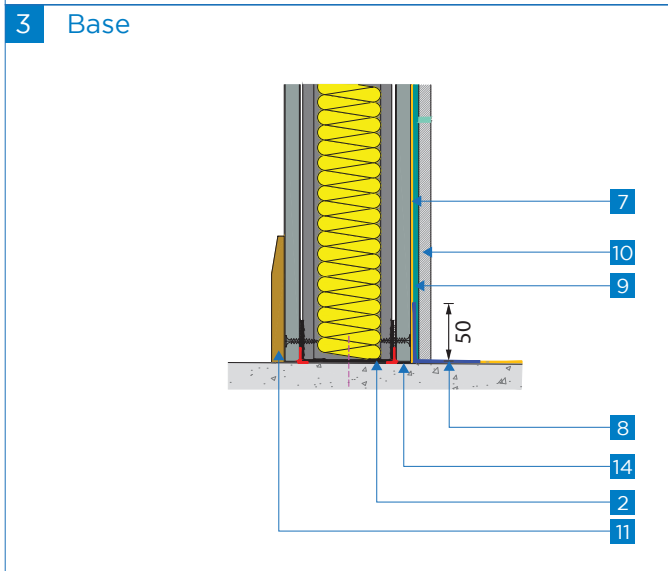
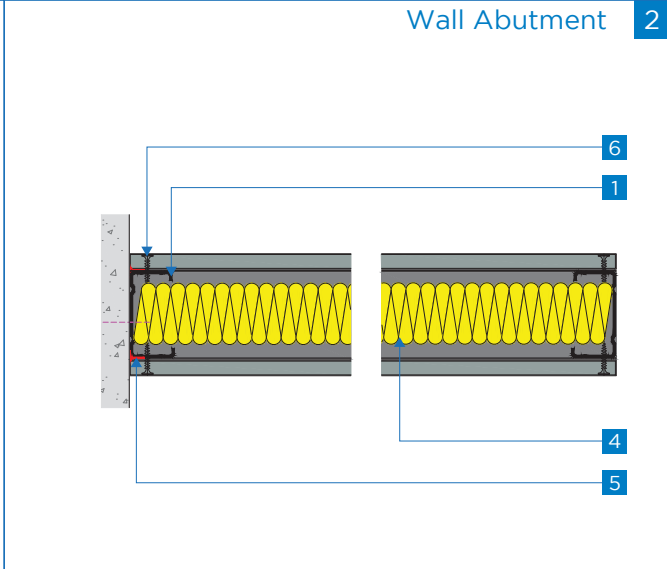
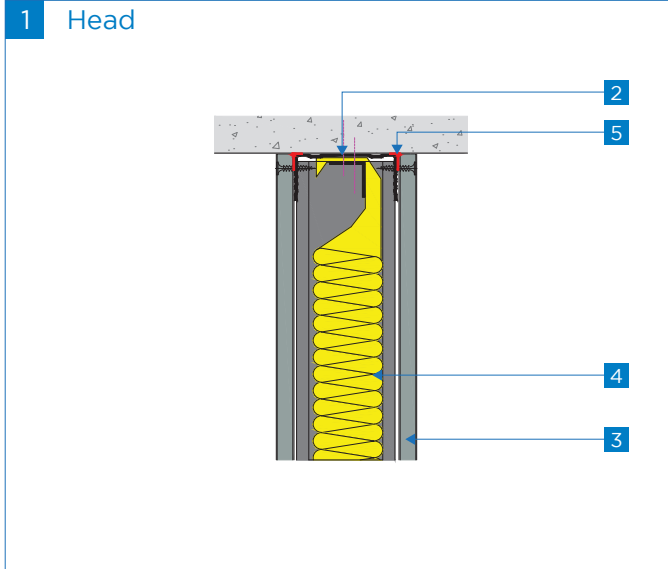
Place Weber BE14 water-proofing tape along the angles or joints by using Weber.Dry.Top as the adhesive.

Wet the surface and apply the second coat perpendicularly, to ensure a pin-hole-free coating. Mix the Weber Tai. Flex with water and apply some adhesive on

the substrate, and then use notched trowel to equally spread the adhesive.

Lay tiles on the adhesive and press firmly or knock gradually with rubber hammer in order to spread the notch of adhesive equally, and ensure a good contact. Grouting and finishing with Weber.Color.

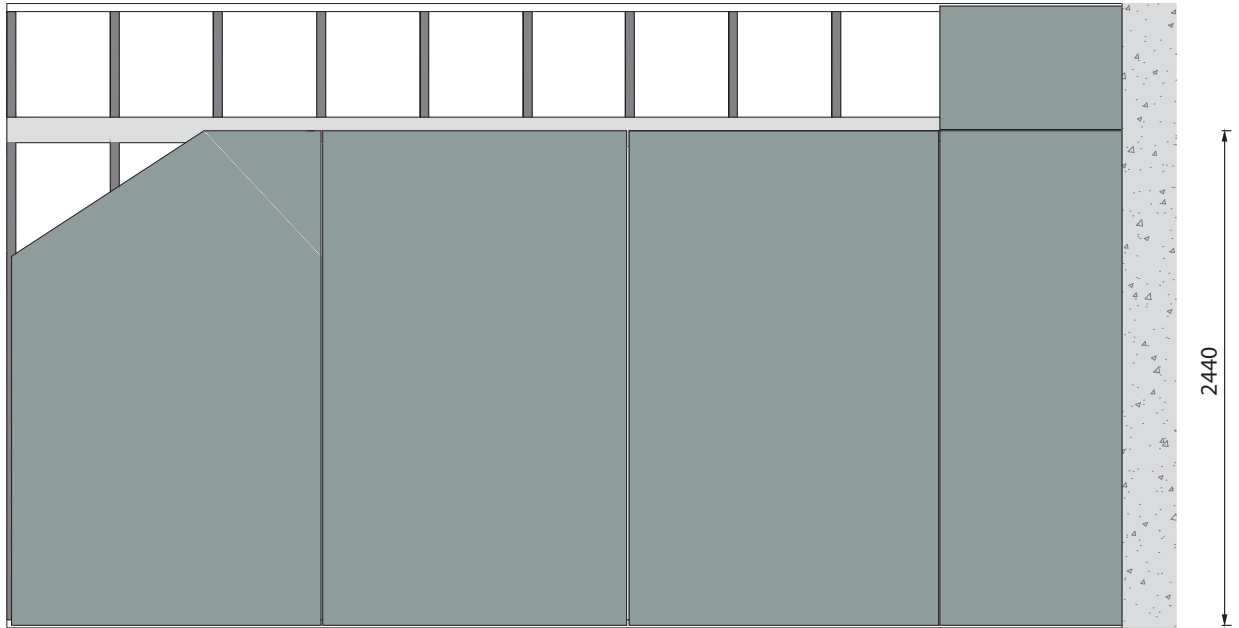
For full installation details, please refer to the Site Book.



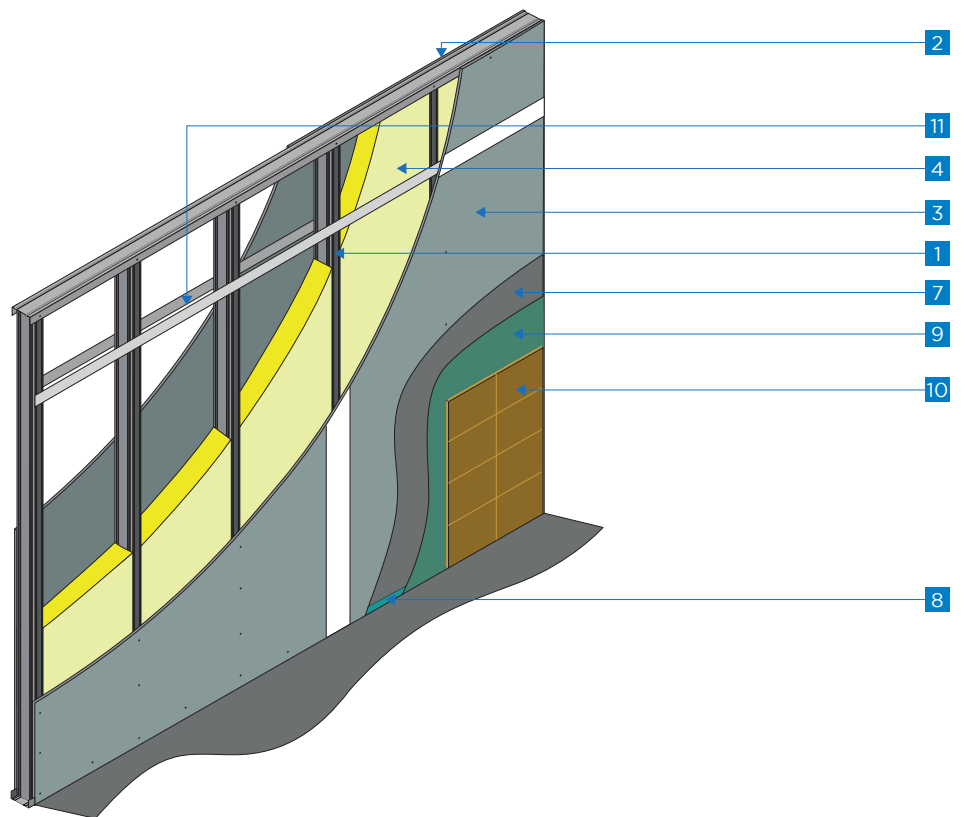
- 1 VT V-Wall 'C' Stud
- 2 VT V-Wall 'U' Track
- 3 Gyproc Plasterboard
- 4 Glasswool
- 5 Hilti Sealant CP-606
- 6 VT Drywall Screw
- 7 Waterproofing Weber Dry Top

- 8 Waterproofing tape Weber BE14
- 9 Tile adhesive Weber Tai Flex
- 10 Ceramic tile (up to 32 kg/m<sup>2</sup>)
- 11 Skirting board( By other)
- 12 VT Flat Strap
- 13 Bulk Fill Gyp-Filler Jointing Compound
- 14 Gyproc Plasterboard (ceiling)

7 Board layout



8 Perspective



- 1 VT V-Wall 'C' Stud
- 2 VT V-Wall 'U' Track
- 3 Gyproc Plasterboard
- 4 Glasswool
- 5 Hilti Sealant CP-606
- 6 VT Drywall Screw
- 7 Waterproofing Weber Dry Top

- 8 Waterproofing tape Weber BE14
- 9 Tile adhesive Weber Tai Flex
- 10 Ceramic tile (up to 32 kg/m<sup>2</sup>)
- 11 VT Flat Strap